

**4** Incubation Channels,  
**1** Emergency Test Channel!



# Getein1160

Immunofluorescence Quantitative Analyzer

Getein1160 Immunofluorescence Quantitative Analyzer is a rapid, compact, user-friendly, multi-item analyzer that provides point-of-care testing and saves diagnosis time for patients. With **4 test channels** and **32 °C constant incubation environment**, Getein1160 could offer timely, accurate and efficient testing for a wide range of scenarios.

## Benefits

The diagram shows the Getein 1160 analyzer from a top-down perspective. The device is white with a black top surface. A large touchscreen display is on the top surface, showing a blue interface with icons for 'Start', 'Stop', 'Run', 'Menu', and 'Settings'. Below the screen, the text 'Getein 1160' is visible. Dimensions are indicated with blue lines and arrows: 152 mm height, 276 mm depth, and 299 mm width. A blue curved arrow points from the 'Constant Temperature' feature to the top of the device. Another blue curved arrow points from the 'Multiple Channels' feature to the right side of the device. A third blue curved arrow points from the 'Auto Cartridge Collection' feature to the bottom of the device. The bottom view of the device shows a black front panel with a speaker grille and various ports.

**Constant Temperature**  
32°C constant test environment, allowing for more accurate test results

**Multiple Channels**  
4 incubation channels  
+  
1 emergency test channel

- **Portable**

Dimensions :299 mm (W) × 276 mm (D) × 152 mm (H)  
Weight :4 kg

- **Detection Performance Improved**

Reduced influence by temperature and improved detection accuracy

- **Convenient**

Easy to operate, user friendly interface

- **Instant Results**

Get results in 3-15 minutes

- **Reliable Accuracy**

Good correlation with CLIA method

- **Auto Cartridge Collection**

Automatically receive the used test cards when the test is finished

# Technical Specifications



## Large Display

- 10.1" LCD touch screen
- Intuitive user interface



## RFID Card Calibration

Automatic reading of batch number and calibration information



## Sampling

- Sample Type: serum, plasma, whole blood, capillary blood, urine, swab, saliva, stool
- Sample Volume: 10 ~ 200  $\mu$ L depending on the assay



## Working Environment

- Temperature: 10°C ~ 35°C
- Relative humidity:  $\leq$  70%
- Air pressure: 70.0 kPa ~ 106.0 kPa



## Repeatability

- CV  $\leq$  2% within range [100, 15000] mV
- CV  $\leq$  10% within range [0, 100] mV



## Built-in Thermal Printer

- Real-time auto-printing
- Support for external printer



## Connectivity

- Ethernet port for LIS/HIS
- COM port for PC
- 2 USB ports for software update and file copy



## Language

English/Spanish/Chinese



## Cases Storage

Over 100,000 test cases



## Test Channel

- 4 incubation channels + 1 emergency test channel
- Multiple test items can be tested at the same time, saving operation time



## Android System

- Smooth operation
- Easy operating software updates



# Application



Laboratory



Clinic



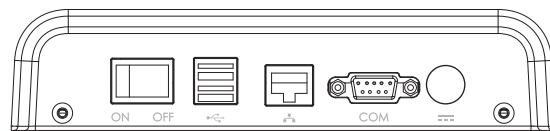
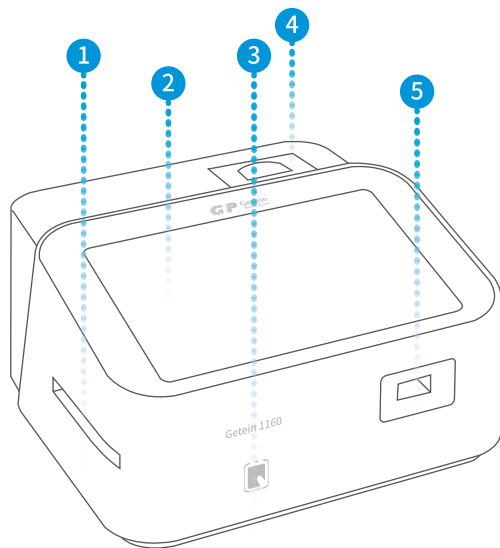
Emergency



Ambulance

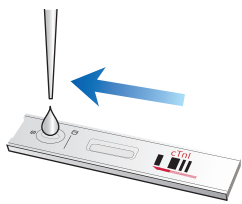


ICU



- 1 Card Exit
- 4 Built-in thermal Printer
- 2 10.1-inch Touch Screen
- 5 Card Inlet
- 3 RFID Card Recognition Zone

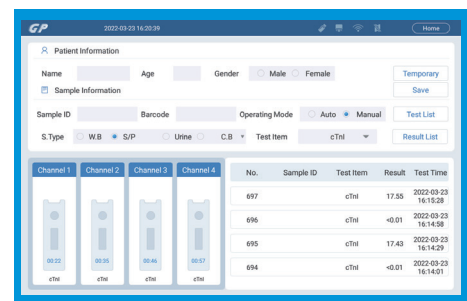
## Operation Procedure



1 Sample dispense



2 Insert test cards, four allowed at the same time



3 Waiting in incubation



4 Result show and print

# TEST ITEMS

Cat. #	TEST ITEMS	DISEASES	CUT-OFF VALUE	SAMPLE TYPES	MEASURING RANGE	SAMPLE VOLUME	REACTION TIME	QUALIFICATION
<b>Cardiac Markers</b>								
IF3001	cTnI	Myocardial infarction	0.10 ng/mL	S/P/WB	0.10-50.00 ng/mL	100 µL	10 min	NMPA CE
New IF3019	hs-cTnI	Myocardial infarction	0.040 ng/mL	S/P/WB	0.01-50.00 ng/mL	100 µL	10 min	NMPA CE
New IF3098	TnT	Myocardial infarction	14.0 pg/mL	S/P/WB	10.0-10000.0 pg/mL	100 µL	15 min	CE
IF3089	BNP	Heart failure	100.0 pg/mL	P/WB	5.0-5000.0 pg/mL	100 µL	10 min	CE
IF3002	NT-proBNP	Heart failure	300 pg/mL	S/P/WB	100-35000 pg/mL	100 µL	10 min	NMPA CE
IF3005	CK-MB/cTnI/Myo	Myocardial damage /infarction	CK-MB: 5.00 ng/mL cTnI: 0.10 ng/mL Myo: 70.0 ng/mL	S/P/WB	2.50-80.00 ng/mL 0.10-50.00 ng/mL 30.0-600.0 ng/mL	100 µL	10 min	NMPA CE
IF3012	CK-MB/cTnI	Myocardial damage /infarction	CK-MB: 5.00 ng/mL cTnI: 0.10 ng/mL	S/P/WB	2.50-80.00 ng/mL 0.10-50.00 ng/mL	100 µL	10 min	CE
IF3014	H-FABP	Myocardial damage	6.36 ng/mL	S/P/WB	1.00-120.00 ng/mL	100 µL	3 min	CE
IF3016	CK-MB/cTnI/H-FABP	Myocardial damage /infarction	CK-MB: 5.00 ng/mL cTnI: 0.10 ng/mL H-FABP: 6.36 ng/mL	S/P/WB	2.50-80.00 ng/mL 0.10-50.00 ng/mL 2.00-100.00 ng/mL	100 µL	10 min	CE
IF3018	CK-MB	Myocardial injury	5.00 ng/mL	S/P/WB	2.50-80.00 ng/mL	100 µL	10 min	CE
<b>Coagulation Markers</b>								
IF3006	D-Dimer	Venous thromboembolism	0.50 mg/L	P/WB	0.10-10.00 mg/L	100 µL	10 min	NMPA CE
<b>Inflammation</b>								
IF3003	hs-CRP+CRP	Cardiovascular inflammation /normal inflammation	3.0 mg/L 10.0 mg/L	S/P/WB/ Fingertip blood	0.5-200.0 mg/L	10 µL	3 min	CE
IF3007	PCT	Sepsis, bacterial infection	0.10 ng/mL	S/P/WB	0.05-50.00 ng/mL	100 µL	15 min	NMPA CE
IF3044	SAA	Bacterial/Virus infection	10.0 mg/L	S/P/WB/ Fingertip blood	5.0-200.0 mg/L	10 µL	5 min	NMPA CE
IF3090	SAA/CRP	Neonatal sepsis, Bacterial/virus infection	SAA: 10.0 mg/L CRP: 10.0 mg/L	S/P/WB/ Peripheral blood	5.0-200.0 mg/L 0.5-200.0 mg/L	10 µL	5 min	NMPA CE
IF3088	IL-6	Acute inflammation	7.0 pg/mL	S/P/WB/ Peripheral blood	1.5-4000.0 pg/mL	100 µL	15 min	CE
<b>Renal Function</b>								
IF3008	CysC	Acute and chronic renal diseases	0.51-1.09 mg/L	S/P/WB	0.50-10.00 mg/L	10 µL	3 min	NMPA CE
IF3009	mAlb	Diabetic nephropathy, hypertensive nephropathy	20.0 mg/L	Urine	10.0-200.0 mg/L	100 µL	3 min	CE
IF3010	NGAL	Acute kidney injury	Serum: 200.0 ng/mL Urine: 100.0 ng/mL	S/Urine	50.0-5000.0 ng/mL	10 µL	10 min	NMPA CE
IF3011	β <sub>2</sub> -MG	Acute and chronic kidney diseases/tumours	0.80-3.00 mg/L	S/P/WB	0.50-20.00 mg/L	10 µL	3 min	NMPA CE
<b>Diabetes Mellitus</b>								
IF3017	HbA1c	Diabetes mellitus	3.80%-5.80%	WB	2.00%-14.00%	10 µL	5 min	NGSP NMPA IFCC CE
<b>Metabolic Marker</b>								
IF3031	25-OH-VD	Osteomalacia, osteoporosis	30.00-50.00 ng/mL	S/P	8.00-70.00 ng/mL	40 µL	15 min	CE
<b>Thyroid Function</b>								
IF3024	TSH	Thyroid malfunction	0.27-4.20 µIU/mL	S/P	0.10-50.00 µIU/mL	100 µL	15 min	NMPA CE
IF3022	T3	Hyperthyroidism, hypothyroidism	1.30-3.10 nmol/L	S/P	0.30-10.00 nmol/L	40 µL	15 min	CE
IF3023	T4	Hyperthyroidism, hypothyroidism	59.00-154.00 nmol/L	S/P	5.40-320.00 nmol/L	40 µL	15 min	CE
IF3067	ft3	Hyperthyroidism, hypothyroidism	3.10-6.80 pmol/L	S/P/WB	0.40-50.00 pmol/L	40 µL	15 min	CE
IF3068	ft4	Hyperthyroidism, hypothyroidism	12.00-22.00 pmol/L	S/P/WB	0.30-100.00 pmol/L	40 µL	15 min	CE

Cat. #	TEST ITEMS	DISEASES	CUT-OFF VALUE	SAMPLE TYPES	MEASURING RANGE	SAMPLE VOLUME	REACTION TIME	QUALIFICATION
<b>Reproduction/Fertility</b>								
IF3013	HCG+β	Fertility	5.1 mIU/mL	S/P	5.0-100000.0 mIU/mL	100 μL	10 min	CE
IF3055	LH	PCOS, infertility evaluation	Refer to User Manual	S/P	0.20-150.00 mIU/mL	100 μL	15 min	CE
IF3056	FSH	PCOS, infertility evaluation and pituitary disorders	Refer to User Manual	S/P	0.20-150.00 mIU/mL	100 μL	15 min	CE
IF3066	AMH	Fertility, PCOS, gonadal function, precocious/late puberty	Refer to User Manual	S/P	0.10-20.00 ng/mL	200 μL	15 min	CE
IF3048	PRL	Infertility, gonadal disorders	Refer to User Manual	S/P	0.50-200.00 ng/mL	100 μL	15 min	NMPA CE
IF3071	Prog	Infertility, evaluation of ovulation	Refer to User Manual	S/P	0.10-40.00 ng/mL	100 μL	15 min	CE
<b>Tumor Markers</b>								
IF3053	tPSA	Prostate cancer	4.00 ng/mL	S/P	0.50-100.00 ng/mL	100 μL	15 min	
IF3072	fPSA	Prostate cancer	1.00 ng/mL	S/P	0.05-30.00 ng/mL	100 μL	10 min	
IF3050	AFP	Liver cancer, cancer of ovaries or testicles, etc.	7.0 ng/mL	S/P	2.0-500.0 ng/mL	100 μL	15 min	CE
IF3051	CEA	Cancer marker: colon cancer etc.	4.7 ng/mL	S/P	2.0-500.0 ng/mL	100 μL	15 min	CE
<b>Infectious Disease</b>								
IF3057	Anti-HCV	Hepatitis C	1.00 S/CO	S/P	1.00-20.00 S/CO	100 μL	15 min	
IF3058	Anti-TP	Syphilis	1.00 S/CO	S/P	1.00-50.00 S/CO	100 μL	15 min	CE
IF3059	Anti-HIV	AIDS	1.00 S/CO	S/P	1.00-1000.00 S/CO	100 μL	15 min	
IF3064	HBsAg	Hepatitis B	1.00 IU/mL	S/P	1.00-100.00 IU/mL	100 μL	15 min	
NEW IF3063	Anti-HBs	Hepatitis B	10.00 mIU/mL	S/P/WB	10.00-1000.00 mIU/mL	100 μL	15 min	
IF3084	2019-nCoV IgM/IgG	COVID-19	1.00 COI	S/P/WB		100 μL	10 min	CE
NEW IF3091	SARS-CoV-2 Antigen	COVID-19	1.00 COI	Nasal swab/Saliva		100 μL	15 min	CE
NEW IF3095	SARS-CoV-2 Neutralizing Antibody	COVID-19	Refer to User Manual	S/P/WB/ Fingertip blood		40 μL	15 min	CE
IF3047	<i>H. pylori</i>	<i>H. pylori</i> infection	5.0 ng/mL	Stool	1.0-200.0 ng/mL	3 drops (about 100 μL)	10 min	CE
<b>Specific Protein and Rheumatism</b>								
NEW IF3075	RF	Rheumatoid arthritis	15.9 IU/mL	S/P/WB	10.0-640.0 IU/mL	10 μL	10 min	CE
NEW IF3076	ASO	Rheumatic fever, acute glomerulonephritis, group A streptococcal infection	400.0 IU/mL	S/P/WB	60.0-1370.0 IU/mL	10 μL	10 min	CE
NEW IF3029	Anti-CCP	Rheumatoid arthritis	25.0 U/mL	S/P/WB	10.0-400.0 U/mL	10 μL	15 min	CE
<b>Others</b>								
NEW IF3077	Ferritin	Anemia/tumors	Male: 30.00-400.00 ng/mL Female: 13.00-150.00 ng/mL	S/P	0.50-1000.00 ng/mL	10 μL	15 min	CE
NEW IF3069	Total IgE	Allergic disorders	Refer to User Manual	S/P/WB	1.00-2000.00 IU/mL	100 μL	15 min	CE

Coming Soon: E2, T, Folate...

**GP Getein Biotech, Inc.**

Add: No.9 Bofu Road, Luhe District, Nanjing, 211505, China  
 Tel: +86-25-68568508/68568594  
 Fax: +86-25-68568500  
 E-mail: sales@getein.com.cn; overseas@getein.com.cn  
 Web: www.getein.com



FSC CE NMPA NGSP IFCC IVD

