

**Tumor  
Markers**

**Hormone  
Markers**

**Diabetes  
Markers**

**Cardiac  
Markers**

**Infection  
Markers**

# fluorecare<sup>®</sup>

Immunofluorescence Quantitative Platform

# fluorecare®



Microprofit fluorecare® Immunofluorescence Quantitative Platform uses immunochromatographic technology, for the diagnosis of common human diseases. Based on specific antigen-antibody reaction, the triggered fluorescence from the fluorochrome-labeled complexes at the test line is collected and automatically calculated. For certain analyte, including serum, plasma, urine or other sample, fluorecare® is able to measure the concentration of various biological markers including tumor markers, hormone markers, infection markers, cardiac markers and diabetes markers with excellent accuracy and easy operation.

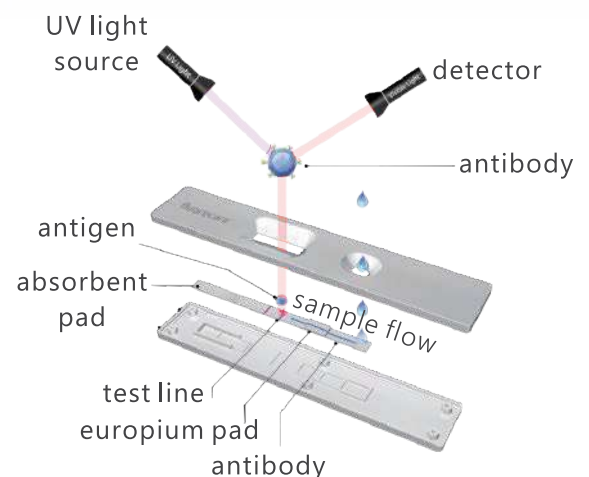
## ◆ Test items

- ▶ **Tumor**  
CEA, AFP, PSA, f-PSA, Cyfra21-1, CA125, CA19-9, PG I/II, Ferritin, Transferrin
- ▶ **Hormone**  
β-HCG, LH, FSH, PRL, Testosterone, Progesterone, AMH, TSH, T3, T4, 25-OH Vitamin D, Cortisol
- ▶ **Diabetes**  
HbA1c, Insulin, C-Peptide, MAU, CYS-C
- ▶ **Infection**  
PCT, CRP, SAA
- ▶ **Cardiac**  
cTnI, MYO, CK-MB, NT-proBNP, D-Dimer

## ◆ Advantages

- POCT (Point-of-care testing)
- Room temperature shipping and storage
- Full platform, multiple parameters
- Inner and independent quality control

## ◆ Technique Principle



- One-step rapid test



# fluorecare<sup>®</sup> MF-T1000

## Immunofluorescence Analyzer

- ▶ **No specialized facilities or personnel needed.**  
Unlike traditional workstation, fluorecare POCT platform does not require specialized facilities. Easy to learn, easy to use.
- ▶ **Automatic calibration and comprehensive parameters.**  
In-built automatic calibration saves time and maintains accuracy.
- ▶ **Intended use in community hospitals and primary clinics.**  
Include primary clinics, small laboratories, community hospitals, medical facilities in rural areas and emergency department in hospitals.
- ▶ **Abundant connectivity options.**  
4 USB ports, 1 LAN port, 1 LIS port and 1 PC connection port.

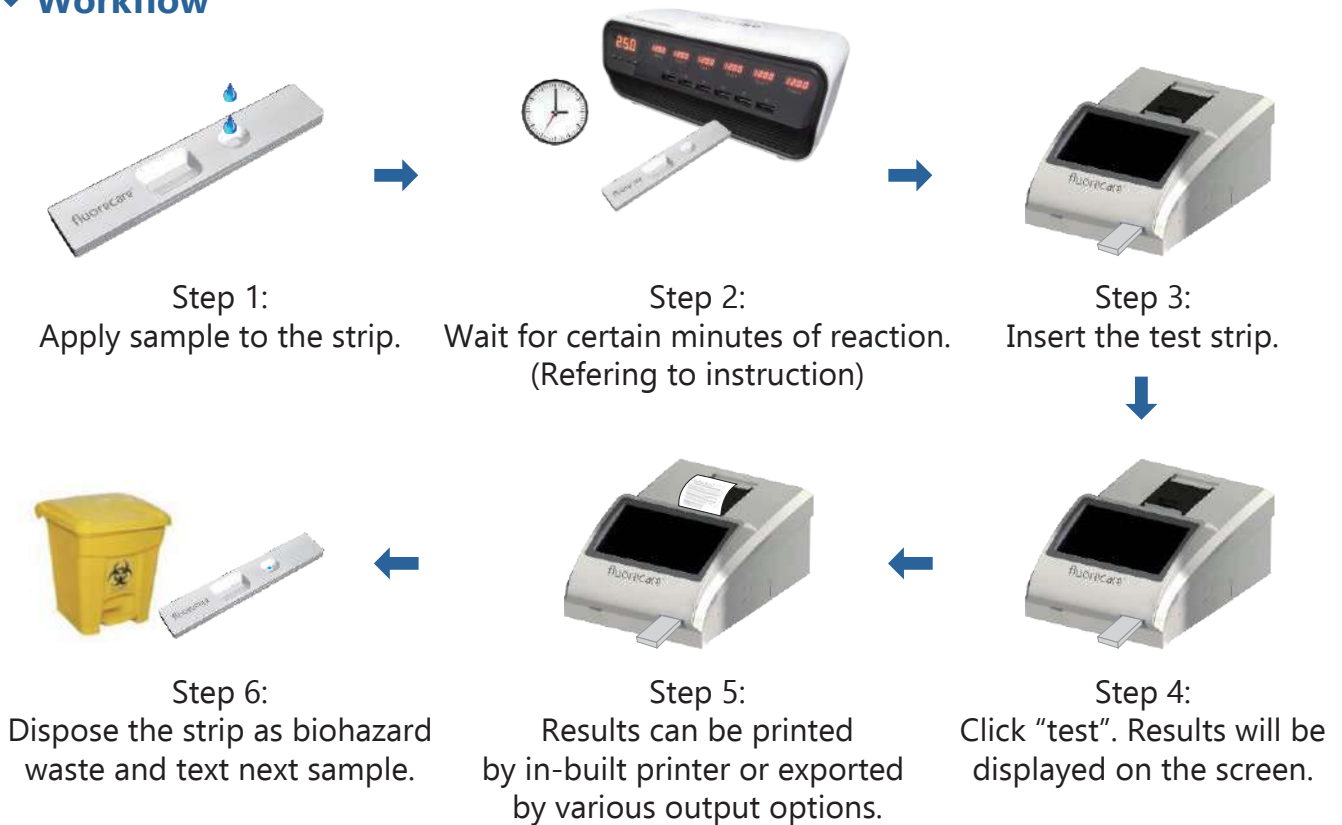
# fluorecare<sup>®</sup> MF-C100

## Temperature Control Instrument

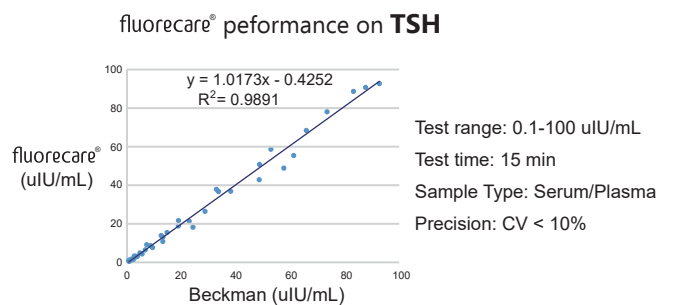
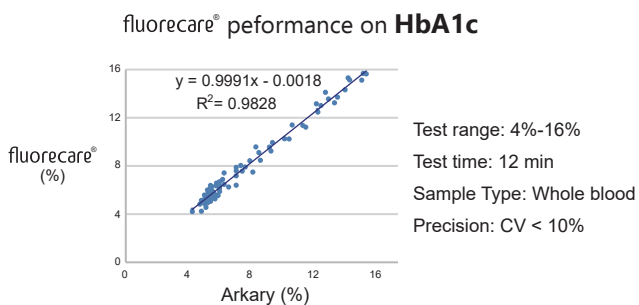
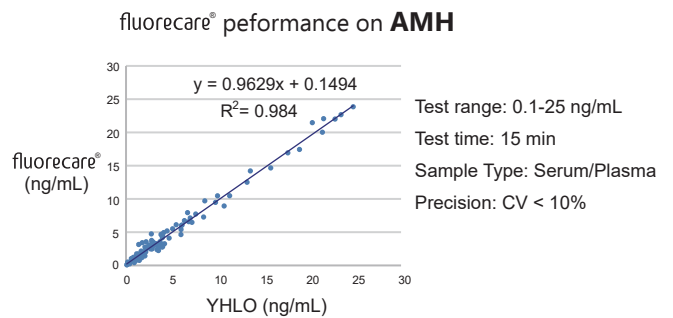
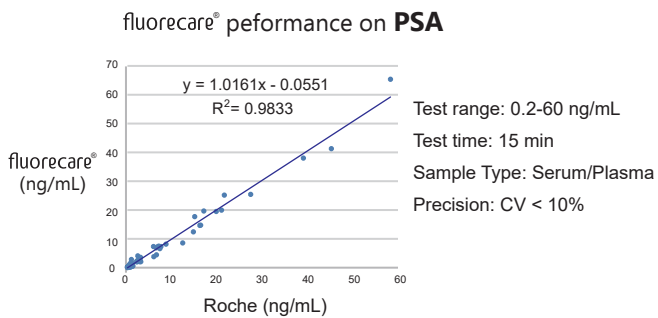
- ▶ **Precise temperature control.**
- ▶ **Automatic timing function.**
- ▶ **A perfect match for fluorecare<sup>®</sup> MF-T1000 and test cassettes.**



## ◆ Workflow



## ◆ High consistence of fluorecare® Immunofluorescence Quantitative Platform with leading product manufacturer.



Product Class	Markers	Specimen	Reaction Time	Measuring Range	Qualification	Ongoing
<b>Tumor</b>	CEA	S/P	15 min	1-200 ng/ml	CE	
	AFP	S/P	15 min	2-300 ng/ml	CE	
	PSA	S/P	15 min	0.2-60 ng/ml		
	f-PSA	S/P	15 min	0.1-25 ng/ml		
	Cyfra21-1	S/P	15 min	1-200 ng/ml	CE	
	CA125	S/P	15 min	1-500 U/ml	CE	
	CA19-9	S/P	15 min	5-300 U/ml	CE	
	CA15-3	S/P	15 min	1-300 U/ml	CE	▲
	PG I/II	S/P	10 min	PG I: 2-800 ng/ml/PG II: 1-100 ng/ml	CE	
	Ferritin	S/P	15 min	10-1000 ng/ml	CE	
	Transferrin	S/P	15 min	0.25-5 g/L	CE	
	Pro-GRP	S/P	15 min	4-500 pg/ml	CE	▲
	HE-4	S/P	15 min	50-1500 pmol/ml	CE	▲
	NSE	S/P	15 min	1-200 ng/ml	CE	▲
	SCCA	S/P	15 min	0.3-100 ng/ml	CE	▲
<b>Hormone</b>	β-HCG	S/P	15 min	5-200000 mIU/ml	CE	
	LH	S/P	15 min	1-100 mIU/ml	CE	
	FSH	S/P	15 min	1-100 mIU/ml	CE	
	PRL	S/P	15 min	1-100 ng/ml	CE	
	Testosterone	S/P	15 min	0.1-15 ng/ml	CE	
	Progesterone	S/P	15 min	0.8-40 ng/ml	CE	
	AMH	S/P	15 min	0.1-25 ng/ml	CE	
	TSH	S/P	15 min	0.1-100 uIU/ml	CE	
	T3	S/P	10 min	0.5-12 nmol/L	CE	
	T4	S/P	10 min	10-300 nmol/L	CE	
	ft3	S/P	15 min	1-50 pmol/ml	CE	▲
	ft4	S/P	10 min	3-77 pmol/L	CE	▲
	25-OH Vitamin D	S/P	10 min	3-100 ng/ml	CE	
	Cortisol	S/P	15 min	0.5-75 µg/dL	CE	
<b>Diabetes</b>	HbA1c	WB	12 min	4%-16%	CE	
	Insulin	S/P	15 min	2-300 mIU/L	CE	
	C-Peptide	S/P	15 min	0.1-30 ng/ml	CE	
	MAU	Urine	15 min	5-200 mg/L	CE	
	CYS-C	S/P	3 min	0.1-8 mg/L	CE	
<b>Infection</b>	PCT	S/P	15 min	0.1-50 ng/ml	CE	
	CRP	S/P/WB	3 min	0.5-150 mg/L	CE	
	SAA	S/P	5 min	5-150 mg/L	CE	
<b>Cardiac</b>	cTnI	S/P	15 min	0.1-50 ng/ml	CE	
	MYO	S/P	15 min	1-500 ng/ml	CE	
	CK-MB	S/P	15 min	1-80 ng/ml	CE	
	NT-proBNP	S/P	15 min	100-30000 pg/ml	CE	
	D-Dimer	S/P	10 min	0.1-10 mg/L	CE	

▲ Under development

Rev.: 2019/07/01

fluorecare<sup>®</sup>, creating a **NEW** impact on point-of-care testing.



Microprofit Biotech Authorized Distributor

Distributed by:

**ImTec**

**DIAGNOSTICS NV**

Contact: [info@imtec.be](mailto:info@imtec.be) | +32(0)3-2251139

